



27456 Northline, Romulus, MI 48174 | Phone: 734.955.9311 Toll Free: 877.786.5067 Fax: 734.955.9314

EDGEKUTTER

Kut to the edge.

**Grinder/Polisher
OWNER'S MANUAL &
OPERATING INSTRUCTIONS**



CAUTION:
Read all safety and
operating instructions
before using this equipment

INTRODUCTION and TABLE OF CONTENTS

INTRODUCTION:

Congratulations from the team at Kut-Rite Manufacturing, and thank you for selecting the EDGEKutter. We are certain that you will be pleased with your purchase. Kut-Rite Manufacturing Co. takes pride in producing the finest products in the industry.

Operated correctly, your equipment should provide you with years of quality service. In order to help you, we have included this manual. This owners manual contains information necessary to operate and maintain your EDGEKutter safely and correctly. Please take a few minutes to familiarize yourself with this equipment by reading and reviewing this manual.

If you should have questions concerning your EDGEKutter, please feel free to call our friendly customer service department at: 734-955-9311 or 877-786-5067.

TABLE OF CONTENTS:

Safety messages	3
General safety precautions	4
Safety tips	6
Product specification	9
Operation Instructions	11
Grinding Operation	12
Pictures and assembly drawings	13
Troubleshooting guide	24
Warranty Registration	25
Warranty	26

Read and follow all safety, operating and maintenance instructions. Failure to read and follow these instructions could result in injury or death to you or others. Failure to read and follow these instructions could also result in damage and/or reduced equipment life.

SAFETY MESSAGES:

Safety messages inform the user about potential hazards that could lead to injury, death and/or equipment damage. Each safety message will be preceded by one of the following (3) three words that identify the severity of the message.

⚠DANGER

Not following instructions **WILL** lead to **DEATH** or **SERIOUS INJURY**

⚠WARNING

Not following instructions **COULD** lead to **DEATH** or **SERIOUS INJURY**

⚠CAUTION

Not following instructions **CAN** lead to injury

DAMAGE PREVENTION AND INFORMATION MESSAGES:

A Damage Prevention Message is to inform the user of important information and/or instructions that could lead to equipment or other property damage if not followed. Information messages convey information that pertains to the equipment being used. Each message will be preceded by the word “NOTE”, as in the example below.

NOTE: Equipment and/or property damage may result if these instructions are not followed.

GENERAL SAFETY PRECAUTIONS AND HAZARD SYMBOLS:

In order to prevent injury, the following safety precautions and symbols should be followed at all times!

Safety Precautions:



KEEP GUARDS IN PLACE.

In order to prevent injury, keep guards in place and in working order at all times.



EXPLOSIVE FUEL!

Gasoline is extremely flammable, its vapors can explode if ignited; store only in approved containers, in well-ventilated, unoccupied buildings and away from sparks or flames. Do not fill the fuel tank while the engine is running or hot. Spilled fuel could ignite if it contacts hot parts or sparks from ignition. Do not start the engine near spilled fuel. Never use gasoline as a cleaning agent.



LETHAL EXHAUST GASES!

Engine exhaust gasses contain poisonous carbon monoxide, an odorless colorless gas that can cause death if inhaled. Avoid inhaling exhaust fumes, and never run the engine in a closed building or confined area.



ELECTRICAL SHOCK!

Never touch electrical wires or components while the motor is running. Exposed, frayed or worn electrical motor wiring can be sources of electrical shock that could cause severe injury or burns.



ENGINE OVER-SPEED.

Never tamper with the governor components or settings to increase the maximum speed of the machine. Severe personal injury and/or equipment damage could result if the equipment is operated speeds above design maximum.

In order to prevent injury, keep guards in place and in working order at all times.



ACCIDENTAL STARTS!

Place the ON/OFF switch in the OFF position before performing any service operation.



ROTATING OR MOVING PARTS!

Keep hands, feet, hair, and clothing away from all moving parts to prevent injury. Never operate a power tool with shrouds or guards removed.



HOT PARTS!

Engine components can become extremely hot from operation. To prevent severe burns, do not touch these areas while the engine is running, or immediately after it is turned off. Never operate the engine with heat shields removed.



ALWAYS USE SAFETY GLASSES!

Safety glasses should always be worn when working around power tools. Everyday eyeglasses only have impact resistant lenses and may not prevent eye injury; they are NOT safety glasses.



ALWAYS USE RESPIRATORY PROTECTION!

Exhaust gases may be harmful if inhaled. Do not operate gas-powered equipment in enclosed spaces. Respiratory protection should be worn when operating gas-powered equipment.



ALWAYS USE HEARING PROTECTION!

To reduce the possibility of hearing loss, always use hearing protection when operating equipment.

Safety Tips:

REMOVE ADJUSTING KEYS AND WRENCHES.

Form a habit of checking to see that keys and adjusting wrenches are removed from the power tool before it is turned on.

KEEP WORK AREA CLEAN.

Cluttered work areas and benches invite accidents.

DO NOT USE IN DANGEROUS ENVIRONMENTS.

Do not operate equipment in dangerous environments. Always keep the work area well lighted.

KEEP CHILDREN AWAY.

All visitors and children should be kept a safe distance from work area.

MAKE WORKSHOP KID PROOF.

Make the workshops kid proof by using padlocks, master switches or by removing starter keys.

DO NOT FORCE THE TOOL.

A power tool will do a job better and safer operating at the rate for which it was designed.

USE THE RIGHT TOOL.

Do not force a tool or an attachment, to do a job that it was not designed to do.

WEAR PROPER APPAREL.

Do not wear loose clothing, gloves, neckties, rings, bracelets, or other jewelry that may be caught in moving parts. Non-slip footwear is recommended. Wear protective hair covering to contain long hair.

SECURE WORK.

Clamps or a vise should be used to hold work whenever practical. Keeping your hands free to operate a power tool is safer.

DO NOT OVERREACH.

Keep proper footing and balance at all times by not overreaching.

MAINTAIN TOOLS WITH CARE.

Keep tools sharp and clean for the best and safest performance. Always follow maintenance instructions for lubricating and when changing accessories.

SHUT DOWN EQUIPMENT.

Equipment should always be shutdown before servicing or when changing accessories such as blades, bits, cutters, and the like.

USE RECOMMENDED ACCESSORIES.

Consult the owner's manual for recommended accessories. Using improper accessories may increase the risk of personal or by-stander injury.

NEVER STAND ON THE TOOL.

Serious injury could occur if a power tool is tipped, or if a cutting tool is unintentionally contacted.

NEVER LEAVE TOOL RUNNING UNATTENDED – TURN POWER OFF.

Do not leave a tool until it comes to a complete stop. Always turn a power tool OFF when leaving the work area, or, when a cut is finished.

CHECK FOR DAMAGED PARTS.

Before using a power tool, check for damaged parts. A guard or any other part that is damaged should be carefully checked to determine it would operate properly and perform its intended function. Always check moving parts for proper alignment or binding. Check for broken parts, mountings and all other conditions that may affect the operation of the power tool. A guard or any damaged part should be properly repaired or replaced.

DIRECTION OF FEED.

Always feed work into a blade or cutter against the direction of rotation. A blade or cutter should always be installed such that rotation is in the direction of the arrow imprinted on the side of the blade or cutter.

Sawing and drilling generates dust. Excessive airborne particles may cause irritation to eyes, skin and respiratory tract. To avoid breathing impairment, always employ dust controls and protection suitable to the material being sawed or drilled; See OSHA (29 CFR Part 1910.1200). Diamond Blades improperly used are dangerous. Comply with American National Standards Institute Safety Code, B7.1 and, Occupational Safety and Health Act covering Speed, Safety Guards, Flanges, Mounting Procedures, General Operating Rules, Handling, Storage and General Machine Conditions.

CALIFORNIA PROPOSITION 65 MESSAGE:

Some dust created by power sanding, sawing, grinding, drilling, and other construction activities contain chemicals known [to the State of California] to cause cancer, birth defects or other reproductive harm. Some examples of these chemicals are:

- Lead, from lead-based paints
- Crystalline silica, from bricks and cement and other masonry products
- Arsenic and chromium, from chemically treated lumber

Your risk from these exposures varies depending on how often you do this type of work. To reduce your exposure to these chemicals, work in a well-ventilated area, and work with approved safety equipment, such as those dust masks that are specially designed to filter out microscopic particles.

For further information, consult the following sources:

<http://www.osha-slc.gov/sltc/silicacrystalline/index.html>

http://www.oehha.org/prop65/out_of_date/6022kLstA.html

SPECIFIC WARNINGS:

⚠CAUTION

- Read Owners Manual
- Wear Protective Gear for: Ear, Eye, Head, Lungs

PRODUCT SPECIFICATIONS:

The EDGEKutter™ is a tool specifically developed for precision grinding and polishing of concrete, stone and wood surfaces. It incorporates the KR7 **EDGEKutter** dust shroud that enables virtually dust free operation with the use of an adequate vacuum system. Operated and used according to this manual, this equipment will provide years of dependable service.

General Description:

The EDGEKutter is powered by a reliable Milwaukee® hand grinder. Optional this tool can be equipped with any hand grinder per customer's request.

Features:

- Adjustable "T" handle for various height settings. (page 14)
- Spring loaded tension throttle for maximum control of contact. (page 15)
- Rocker pivot suspension for optimum maneuverability. (page 16)
- Grinder hover for precise angle adjustment. (page 17)
- KR7 shroud and seal for maximum dust containment. (page 18)

YOUR EDGEKUTTER

Please take a moment to familiarize yourself with your EDGEKutter, and some of its features.

Read the Operation Instructions before starting the equipment.



EDGEKutter Operation Instructions: ***User Adjustments***

The EDGEKutter is equipped with several ergonomic adjustments that you should make, so that the machine fits your grinding/polishing technique. Make these adjustments prior to operation.

- “T” Handle: The T Handle has three positions for adjusting the height. Remove the spring pin and adjust to the setting that is most comfortable.
- Throttle Linkage: The Throttle linkage has 4 settings. To adjust, remove the nut from the control arm and move the control arm to a different hole position. (Note: move closer to hand grip to decrease tension and away from the grip to increase tension).
- Grinder Hover: This adjustment controls the tilt of the grinder head. Prior to adjustment, turn the machine on while holding the T Handle. The machine will either hover to the right or left. Turn the machine off and proceed to make adjustment.
 - Right Hover: If the machine is hovering to the right and you desire to have less right hover, remove the clasp on the control arm that connects to the spring tension assembly. Turn the spring tension nut clockwise two turns. Turn the machine on again while holding T Handle and assess adjustment. Repeat these steps until machine is hovering to your liking.
 - Left Hover: If the machine is hovering to the left and you desire to have less left hover, remove the clasp on the control arm that connects to the spring tension assembly. Turn the spring tension nut counter clockwise two turns. Turn the machine on again while holding the T Handle and assess adjustment. Repeat these steps until machine is hovering to your liking.
 - Back Hover: If the machine is hovering away from the edge and you desire to have less hover, lower the left wheel and retighten the jam nut.
- Shroud Seal: The shroud seal should be slightly touching the surface. To adjust, simply remove the Velcro seal and re-attach. Make sure that the seal is touching floor slightly all the way around the circumference.

Grinding Operation

The EDGEKutter is designed to work with several different right angle grinders. Prior to operation, verify that the grinder switch lock is in engaged and the grinder is plugged in to the EDGEKutter electrical box.

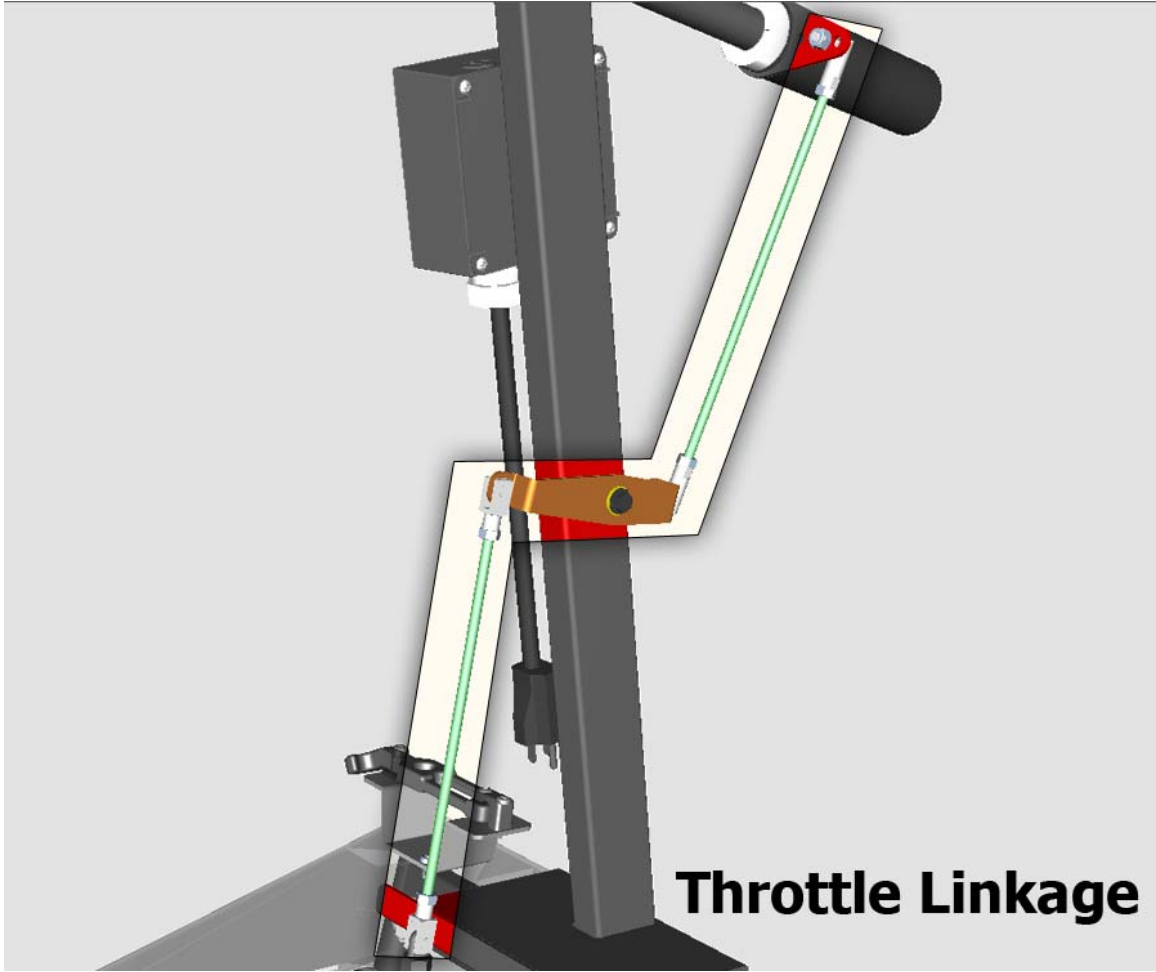
Note: Prior to operation, connect 1.5" hose to shroud and 120 volt extension cable to electric box. Feed the hose and electric cable through the connection cradle and connect the rubber latch. This will keep the hose and cable out of your path while maneuvering the grinder.

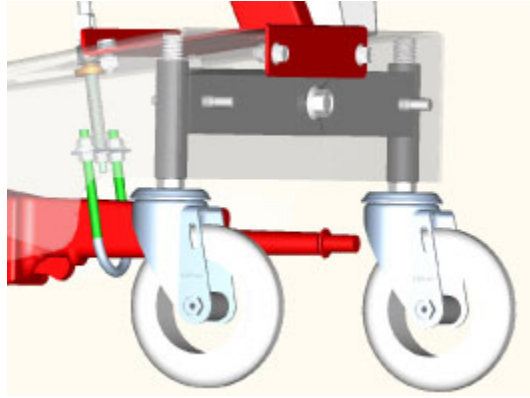
To operate, grab the T Handle and turn the switch on. Position your other hand on the throttle grip and begin moving the machine left to right. You can twist the throttle grip to hover the machine to the left and release to stop the left hover action.

- Edging: When edging, remove the edge seal and position the grinding head close to the vertical surface. Simply move the machine down the edge right to left while twisting the throttle grip slightly. This will create left hover and the machine will move easily down the edge. Release the throttle grip to move back to the right. (note: when the throttle grip is twisted, the grinder is tilted up on the edge of the grinding wheel.)
- Open Area Grinding: Simply move the machine from left to right while maintaining tension on the Throttle Handle. To focus on a specific area, turn the Throttle Handle to tilt the head of the grinder while holding on to the "T" handle.

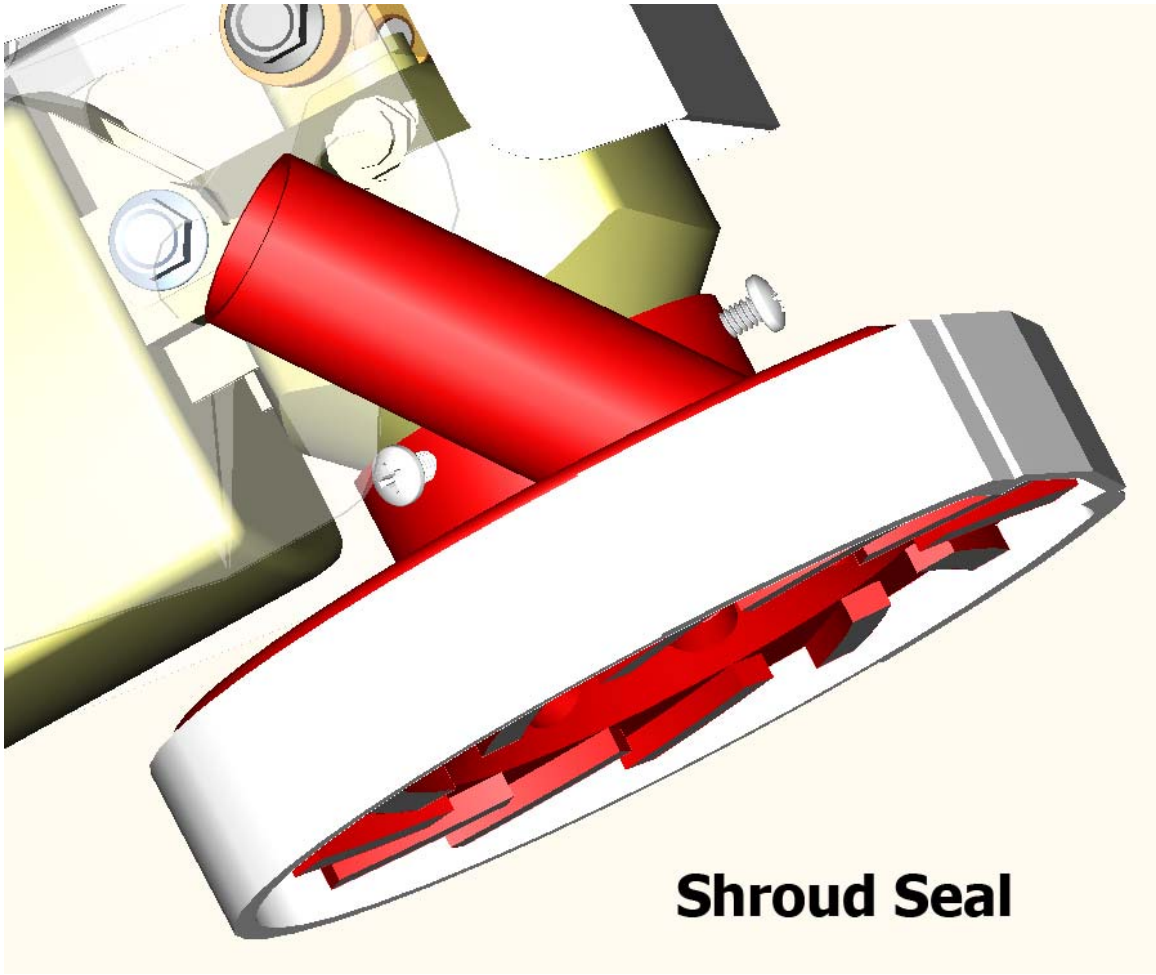
Pictures and Assembly drawings





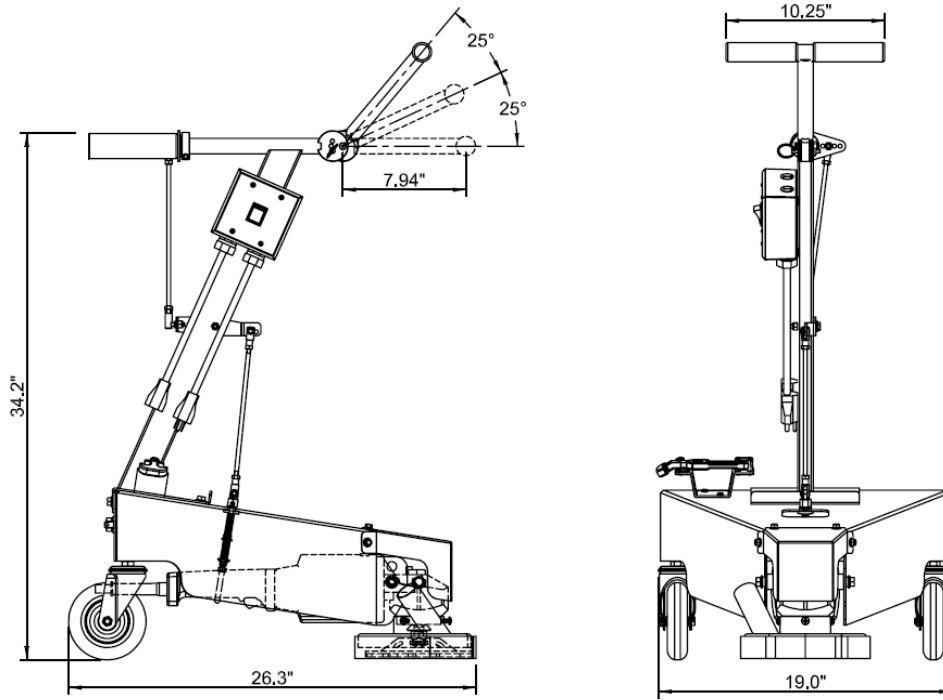


Rocker pivot suspension



Shroud Seal

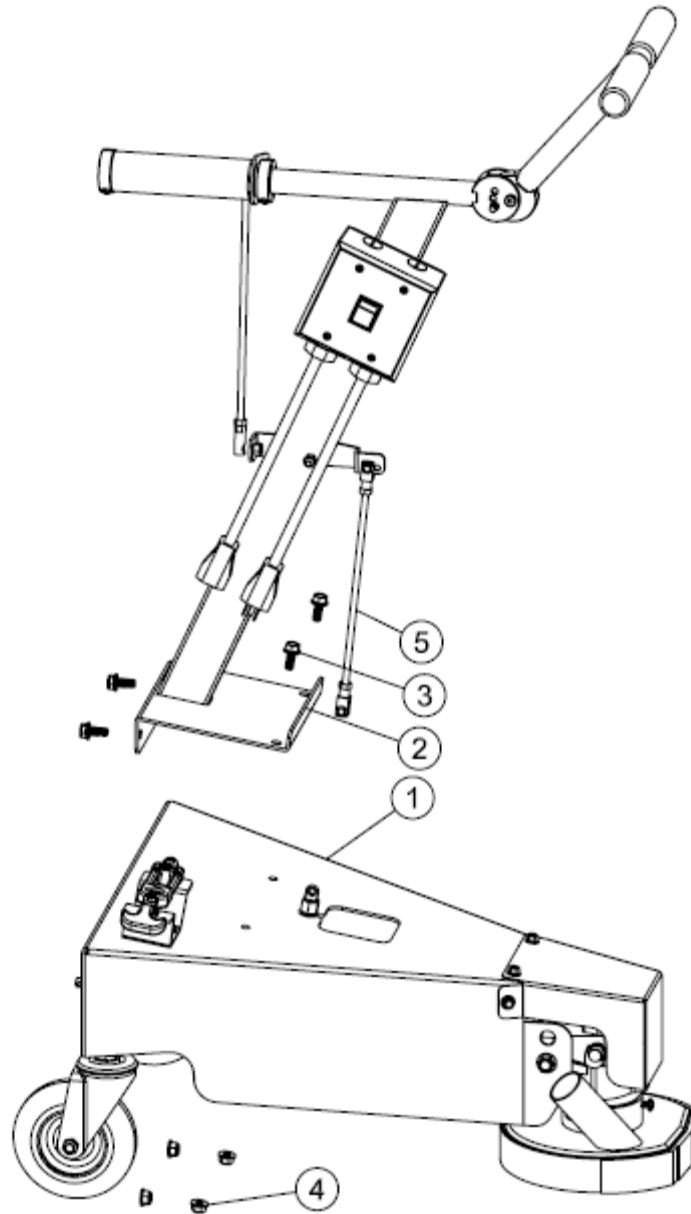
EDGEKutter™



BASIC DIMENSIONS

EDGEKutter™

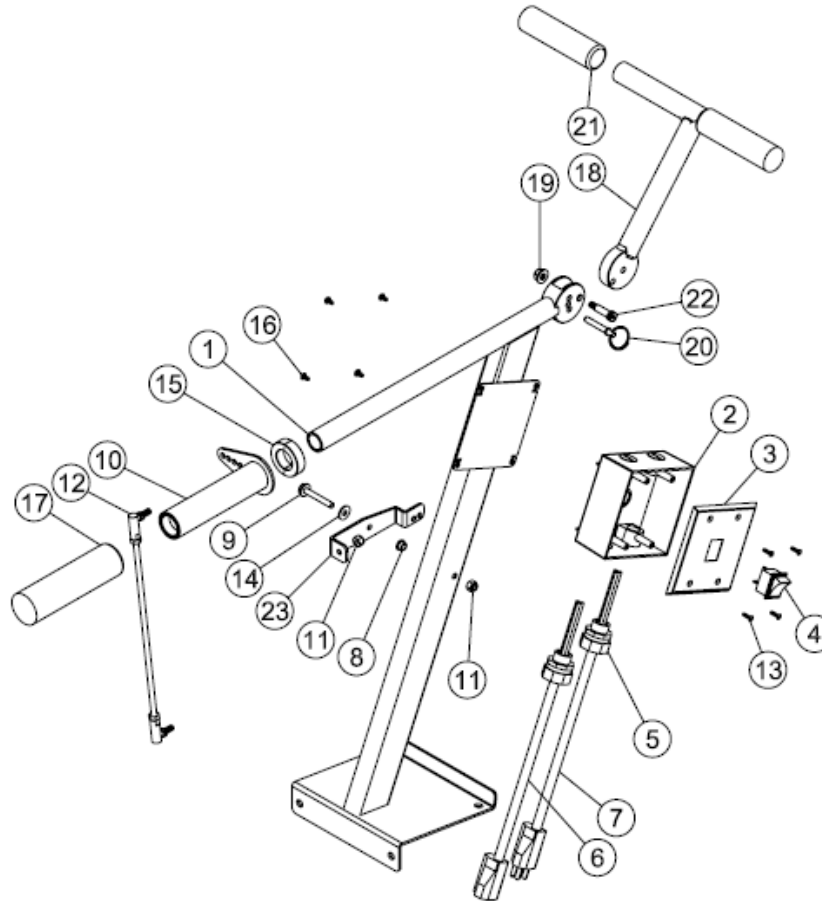
ITEM	QTY	P/N	REV	DESCRIPTION
1	1	600001	A	BASE FINAL W/MILWAUKEE 6066 GRINDER
2	1	600002	A	OPERATOR CONTROL FINAL
3	4	600563		SCREW, CAP HEX HD FLANGED 5/16-18UNC x 3/4"LG ZINC G5
4	4	600600		NUT, HEX 5/16-18 NYLON INSERT 7/16 FLGD ZINC GRD 5
5	1	600017		TIEROD, CONNECTING LOWER



HANDLE AND BASE ASSEMBLY

EDGEKutter™

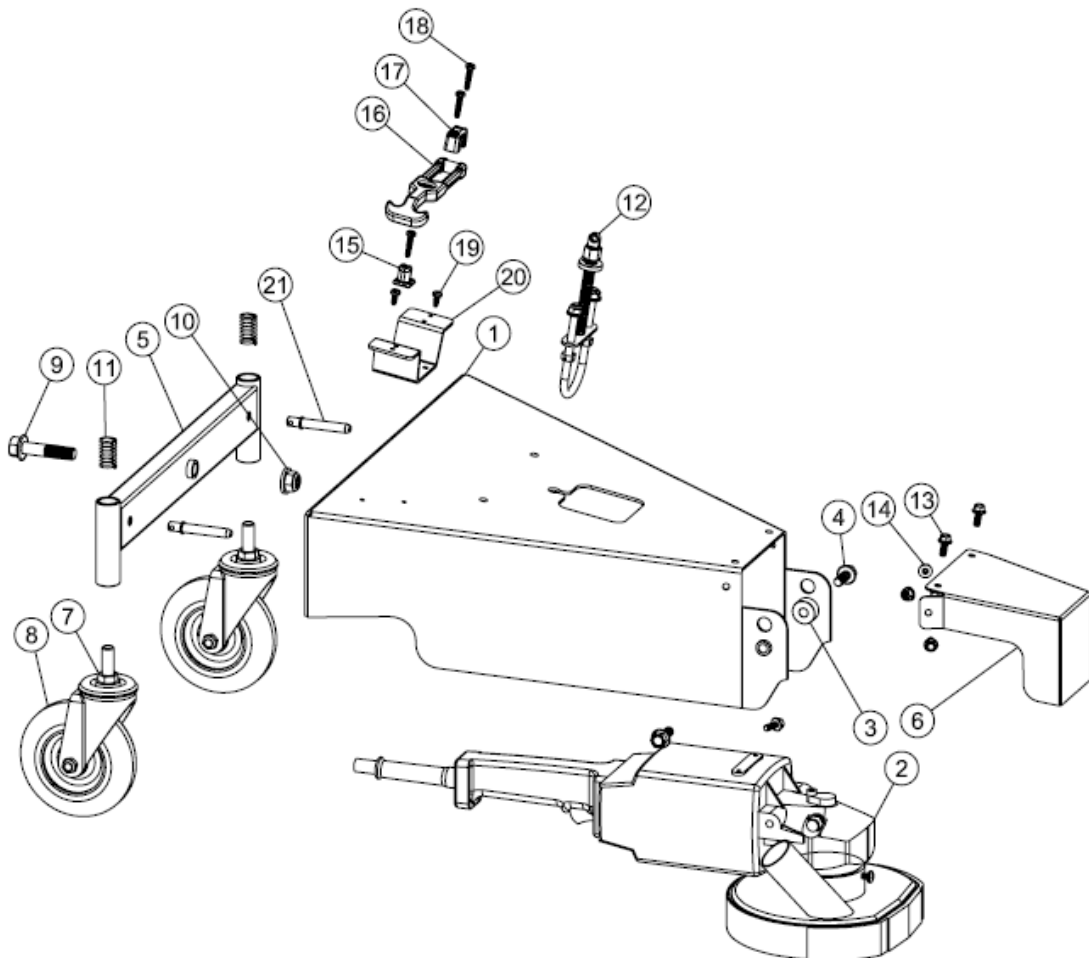
ITEM	QTY	P/N	REV	DESCRIPTION
1	1	600012		WELDMENT, CONTROL FRAME
2	1	600115		BOX, OUTLET 5 HLE 1/2", 2 GANG, SIMA ELECTRIC
3	1	600013	A	PLATE, COVER MODIFIED
4	1	600010		SWITCH, ROCKER CURVETTE 125V 20AMP CARLING
5	2	600513		CONNECTOR, 1/2" CORD GRIP LIQUID-TIGHT
6	1	60053302		POWER CORD, EQUIPMENT 12/3 125V 15A SJTW
7	1	60053301		POWER CORD, SUPPLY 12/3 125V 15A SJTW
8	1	600519		BEARING, FLGD SLEEVE 1/4 ID x 3/8 OD x 1/4 LG x 1/2 FLG
9	1	600522		SCREW, CAP HEX HD 1/4-20UNC x 1.750 FLGD ZINC
10	1	600039		HANDLE, TILT CONTROL
11	3	401066		NUT, HEX # 1/4-20, NYLOK ZINC
12	1	600019		TIEROD, CONNECTING UPPER
13	4	600521		SCREW, 6-32UNF x 1/2" ROUND HD PH
14	1	600508		WASHER, NYLON 1/4 x .472 x .062 THK
15	2	600031	A	COLLAR, CLAMP-ON ALUMINUM McMASTER 6157K18
16	4	600523		SCREW, 8-32UNF x 5/16 LG QK-DRL PN HD PHTHD-FRNG ZINC
17	1	600525		GRIP, HAND 1,219 TO 1,297 OD TUBE x 6 LG CUSHD SLD-ON
18	1	600012		WELDMENT, CONTROL FRAME
19	1	600600		NUT, HEX 5/16-18 NYLON INSERT 7/16 FLGD ZINC GRD 5
20	1	600632		PIN, DETENT BALL LOCK 7/8 x 2.75 LG W/RING
21	2	600524		GRIP, HAND .875 TO 1.00 OD TUBE x 4.50 LG CUSHD SLD-ON
22	1	600537		SCREW, SHOULDER 5/16 DIA SHLDR .875 LG .250-20UNC PELLET LOK
23	1	600010		BELL CRANK, EDGE CONTROL



HANDLE ASSEMBLY

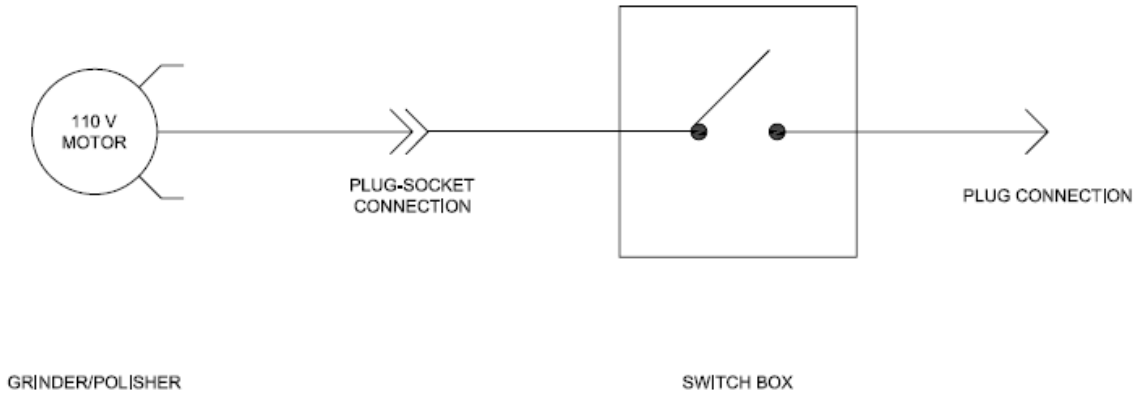
EDGEKutter™

ITEM	QTY	P/N	REV	DESCRIPTION
1	1	600003	A	BASE COVER
2	1	600035	A	GRINDER (MILWAUKEE ® 6066 SHOWN)
3	2	600022	A	INSERT, GRINDER MILWAUKEE ® 6066
4	2	600567		SCREW, CAP HEX HD FLGD 3/8-16UNC x 1 LG ZINC GR 5
5	1	600005		WELDMENT, LEVELER
6	1	600004		COVER, GRINDER HEAD
7	2	600012		NUT, 5/8-11UNC THIN ZINC
8	2	600520		CASTER, 5 WHEEL PERFORMA RND TRED COLSON
9	1	600508		SCREW, CAP 1/2-13UNC STL ZINC
10	1	600603		NUT, 1/2-13UNC HEX FLANGED STL INSERT LOK G5 ZINC
11	2	600509		SPRING, 11/16 x .091WIRE x 1-1/4 LG OVERALL
12	1	600006	B	U-BOLT, TILT CONTROL
13	4	600556		SCREW, CAP HEX 1/4-20UNC x 3/4 FLGD LG ZINC GRD 5
14	4	600599		NUT, 1/4-20UNC HEX FLANGED GRD5 NYLON INSERT
15	1	600527C		KEEPER, DRAW LATCH
16	1	600527A		HANDLE, TEE DRAW LATCH RUBBER 3 LG
17	1	600525B		BRACKET, DRAW LATCH
18	3	600528		SCREW, 10-32UNC x 1.0LG ZNC STL TF THRD-CUT PHD PH
19	2	600529		SCREW, 10-32UNC x .375LG ZNC STL TF THRD-CUT PHD PH
20	1	600037		BRACKET, HOSE CLAMPING
21	2	600631		PIN, LOCKING W/RING



BASE ASSEMBLY

EDGE KUTTER
ELECTRICAL DIAGRAM



Troubleshooting Guide

- | | |
|---|---|
| 1. Grinder will not start | Check to see if grinder is plugged into the equipment power cord from the receptacle.
Check the switch on the grinder to make sure is on and locked. |
| 2. Grinder vibrates | Check diamond wheel to make sure it is tight on the grinder arbor. |
| 3. Dust comes out from under KR7 dust shroud | Check to see that shroud seal is properly adjusted. |
| 4. EDGEKutter pulls strong in one direction | Check the grinder hover procedure in the operation instructions. |
| 5. EDGEKutter still not working properly | Contact service department. |

Kut-Rite is there to answer any problems or questions. Call us at 877-786-5067



Attention Customer!

END-USER, PRE-OPERATION INSPECTION CHECKLIST AND WARRANTY REGISTRATION

Please complete the following inspection procedure and check in the list below. Fill-in the form and fax this page to (734) 955-9314 to activate your warranty.

- No parts or components on the machine have been damaged in shipment. Check for shipping damage and loose, broken, or missing parts.
- All labels on machine are in place and securely attached.
- All bolts, fasteners and wires are in place and tightly secured.
- Check that drive belt(s) are tight and in line. Start motor. (See motor manual for procedure).
- Test and run the unit while checking that all components are operating correctly.
- Shut down machine and re-check hardware for tightness within the first hour of use.
- Record the Serial Number of your machine in the space provided on this page.

The checklist, as outlined above, has been performed on this unit by:

Print Name

Signature

Inspection Date

Company Name

Address

Telephone

Equipment Model

Serial Number

Motor Model

Serial Number

Dealer/Seller

Delivery Date

Limited Equipment Warranty

All statements, technical information and recommendations contained in seller's literature are based on tests believed to be reliable, but the accuracy or completeness thereof is not guaranteed, and the following is made in lieu of all warranties, expressed or implied.

1. **Warranty.** Seller warrants each new piece of equipment or part to be free from defects in material and workmanship under normal use and maintenance as herein provided. This warranty does not apply to components manufactured by others such as, but not limited to, bearings, and engines; such components that may or may not have their own warranties. Seller's sole obligation for any breach of warranty or breach of contract for defects, deliberate or accidental omissions, shall be limited to repairing, replacing, or allowing credit for, at seller's option, any part which, under normal and proper use and maintenance, proves defective in material or workmanship within ninety (90) days after delivery to or five hundred (500) hours of use by buyer, whichever shall occur first; provided, however, that notice of any such defect or omission and satisfactory proof thereof is promptly given by buyer to seller, and thereafter, such defective part is returned to seller with transportation charges prepaid, and seller's examination proves such part to have been defective. This warranty does not apply in respect to damages to any product or accessory or attachment thereof caused by overloading or other misuse, neglect or accident, nor does this warranty apply to any product or accessory or attachment thereof, which has been repaired or altered in any way which, in the sole judgment of the seller, affects the performance, stability or general purpose for which it was manufactured. In the manufacture of buyer's equipment, parts may be omitted or equivalent functioning equipment and components may be substituted for the original specified equipment upon the sole judgment and discretion of seller. Seller's only obligation shall be to replace such quantity of the product proved to be defective. This warranty does not obligate Kut-Rite to bear any transportation charges or personnel time in connection with the replacement or repair of defective parts. This warranty does not obligate Kut-Rite to bear any expense for travel time or of personnel in connection with any service calls. Kut-Rite will not, in any event, be liable to the user for any consequential damages arising out of this sale for the loss of use, lost profits or revenue, interest, lost goodwill or work stoppage. Seller shall not be liable for any injury, loss or damage, direct or consequential, arising out of the use or the inability to use the product or for environmental claims. It being understood that the seller has no means of controlling the products final use; therefore, it shall be buyer's responsibility to determine suitability of product for intended use and buyer assumes all risks and liabilities whatsoever, in connection therewith. This warranty is in lieu of all other warranties (except of title), expressed or implied, and there is no implied warranty of merchantability or of fitness for a particular purpose. In no event shall Seller be liable for consequential or special damages. Used products are sold on an "as is" basis, and there is no implied warranty of merchantability or of fitness for a particular purpose, unless otherwise expressly stated on the face of this form.
2. **Corrections.** Typographical or clerical errors contained herein are subject to correction by seller.
3. **Fair labor standards.** Seller's products are produced in the United States and in conformity with all applicable provisions of the fair labor standards act of 1938 as amended, and any regulations and orders of the United States Department of Labor issued hereunder.
4. **Legal action.** Buyer shall be responsible for all costs of collection of outstanding indebtedness, including but not limited to attorney's fees and court costs to seller. Buyer shall reimburse seller for any and all litigation expenses seller incurs as a result of an unsuccessful buyer claim. The jurisdiction and venue of the court for any litigation, state or federal, brought by the buyer and/or seller shall be located in venue determined by seller.
5. **Entire agreement and applicable law.** The rights and obligations of seller and buyer shall be governed by the laws of the state of Michigan, USA in force on date hereof. The provisions hereof are intended by buyer and seller as a final expression of their agreement, and are intended also, as a complete and exclusive statement of all terms applicable to buyer's order. No waiver, modification, or addition to any of the terms hereof shall be binding on the seller, unless made in writing by an officer at seller's office as stated herein. In the event of conflict between buyer's purchase order and the terms hereof, the latter shall control. If any provisions herein are to any extent invalid or unenforceable, the remainder of the warranty shall not be affected thereby and shall be valid and enforceable to the fullest extent permitted by law.
6. **Assignment.** Buyer shall not assign or transfer this warranty without seller's written consent.